



Steamboat Springs Board of Realtors, Inc.



Routt County and Steamboat Springs 2002 Subdivision Plat Maps

**The Sanctuary □
Filing 3**

P.O. Box 775103 • 625 South Lincoln Ave., #202

Steamboat Springs, Colorado 80477

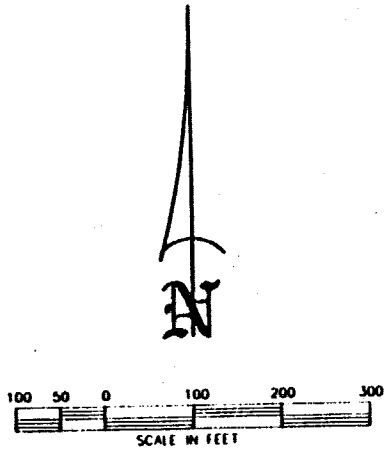
Office: 970.879.4663 • Fax: 970.879.1031

www.ssbr.org

Disclaimer: The Plat Maps contained herein are deemed reliable but not guaranteed. The Steamboat Springs Board of Realtors, individual real estate companies and their agents make no representation as to their accuracy or completeness. The Plats have been altered and abbreviated for Realtors and their client use as an aid in real estate sales. Some Plat Maps or Re-Plats may have been omitted. The original and complete Plats may be obtained from Routt County.

THE SANCTUARY - FILING NO. 3

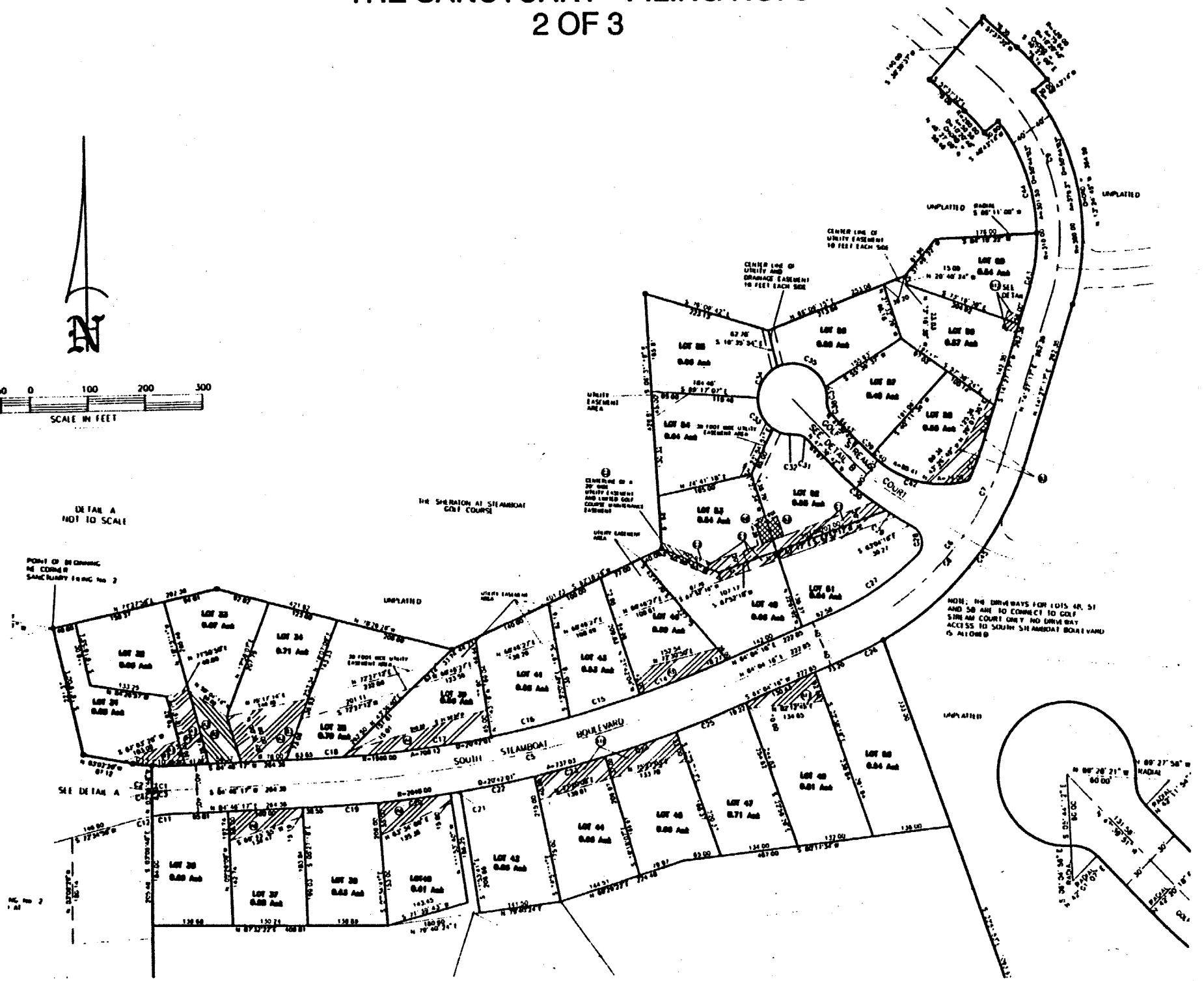
2 OF 3



DETAIL A
NOT TO SCALE

POINT OF BEGINNING
OF CORNER
SANCTUARY FILING NO. 2

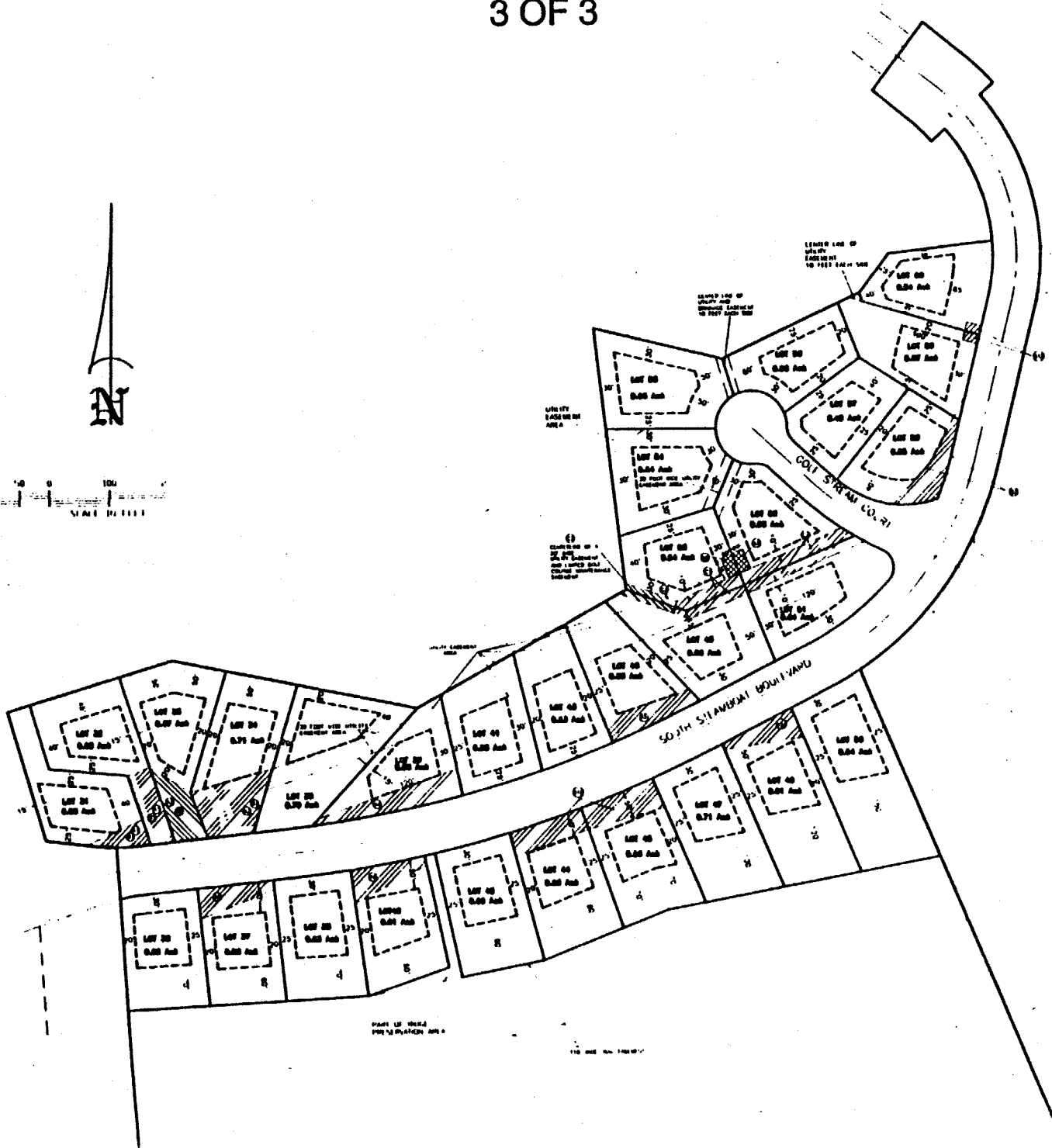
THE SHERATON AT SEABOARD
GOLF COURSE



NOTE: THE DRIVEWAYS FOR LOTS 40, 51 AND 50 ARE TO CONNECT TO GOLF STREAM COURT ONLY. NO DRIVEWAY ACCESS TO SEABOARD BOULEVARD IS ALLOWED.

THE SANCTUARY - FILING NO. 3

3 OF 3



REPLATE LOTS 42 & 44 SANCTUARY FILING 3

